

BR&E Update - Blackheath Industrial AGM

Date: 16 October 2024

By Kyle Williamson





Street Light Requests

1 Station Road

This section focuses on specific street lighting issues and requests raised regarding Station Road, including concerns about visibility, safety, and potential upgrades to the existing street lights.

2 Range Road

Residents of Range Road have voiced concerns about the lack of adequate street lighting, highlighting safety issues during nighttime hours. Plans to address this issue are being explored, including potential installations of additional streetlights.

3 Nicole Avenue

Nicole Avenue, a residential street, has received feedback regarding the need for improved street lighting. This includes concerns about visibility for pedestrians and cyclists, as well as general safety concerns at night.



Affected Areas

| Station Road | Range Road | Nicole Avenue |
|--|--|---|
| Concerns about visibility and safety during night hours. | Reports of inadequate street lighting, leading to safety issues. | Request for improved lighting to enhance pedestrian and cyclist visibility. |

Station road - Based on the investigation findings, the installation of streetlights on Station Street is warranted. However, since the road reserve is not registered as a public road and is located within CCT-owned property, the Urban Mobility, Public Lighting Development department will not be responsible for lighting this area. Urban Mobility-to address the lighting needs on Station Street.

With reference to the investigation findings, the possibility of installing streetlights in **Range, Helene and Nicole Street, Blackheath Industrial** is warranted, however, because of the existing overhead and underground reticulation services i.e. Water and Electricity, Public Lighting Development cannot install streetlights.

Station Road



Intersection Turn Plans

Design Unit

The relevant design unit is responsible for developing and submitting the intersection turn plans.

Nobesuthu

This plan will be submitted to Nobesuthu, the municipal planning department, for review and approval. Nobesuthu will assess the plans for feasibility, safety, and impact on traffic flow.

Safety and Traffic

The plans aim to improve intersection safety and traffic flow, including measures such as lane configurations.



Investigate high-priority streets for safety concerns with the BR&E Unit.



DAMAGED MANHOLE COVER: BUTTSKOP ROAD



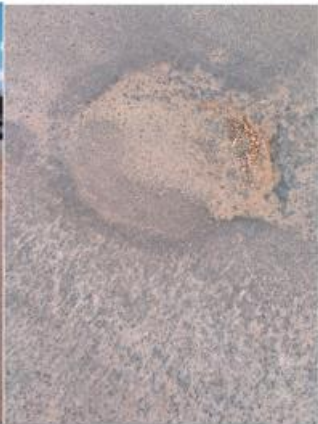
BLOCKED OVERFLOW SEWER: BUTTSKOP ROAD BLACKHEATH



POTHLES: TRAFORD ROAD



POTHLES: SAXONBERG ROAD



Truck Holding Project

Project Scope

This project aims to create designated holding areas for trucks, minimizing congestion and improving traffic flow in the surrounding area.

Environmental Impact

The project will be designed to minimize environmental impact, incorporating measures such as noise reduction and pollution control.

Industrial Engagement

Community members will be actively involved in the project, providing input on design considerations and potential impacts.



Truck holding site identified

REM ERF1390 corner of station west road and range road being investigated

6. Identified medium term opportunities

Kuilsriver Industria – Erf 6274-RE and 6661

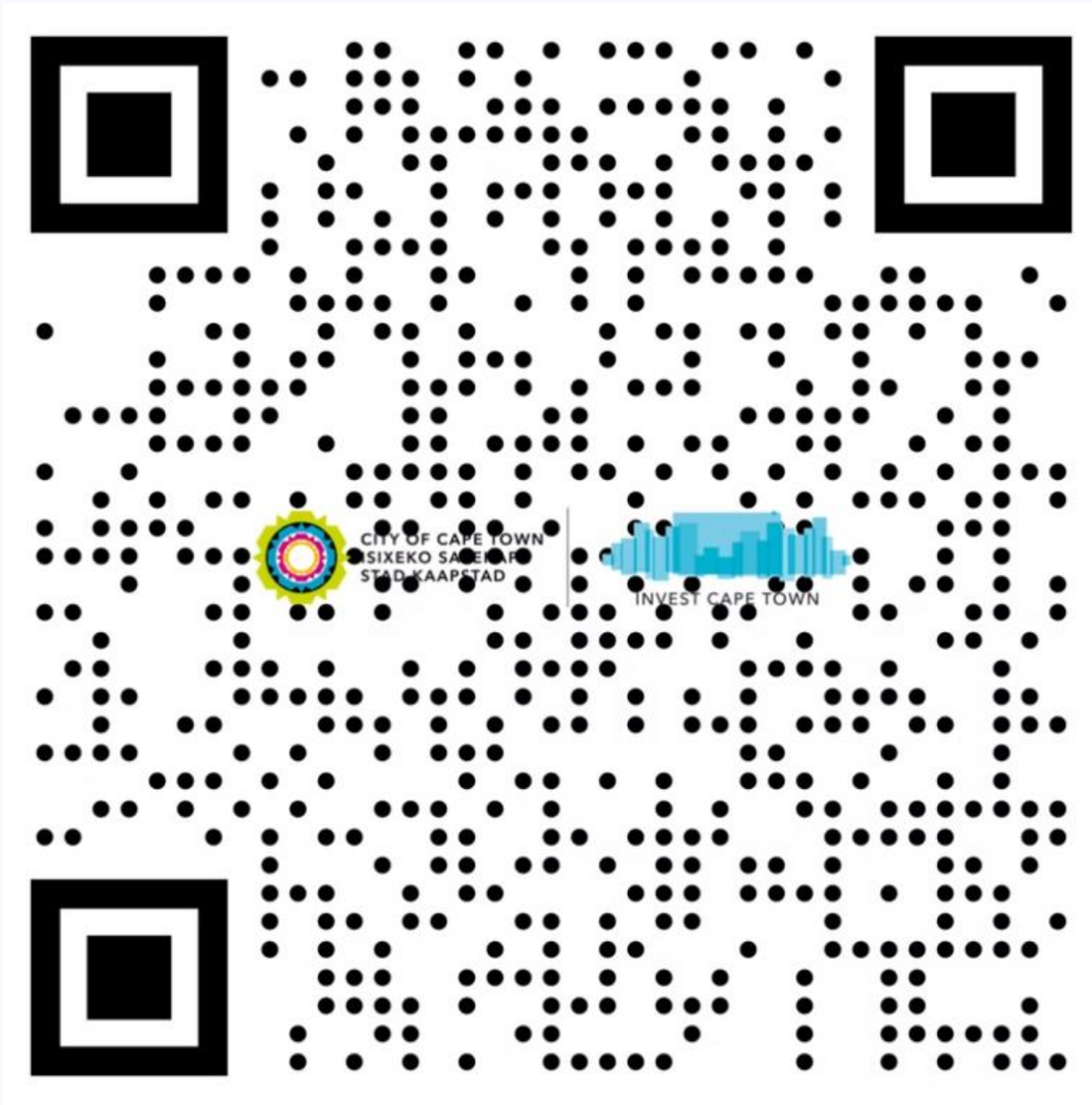
| | |
|---------------------|--|
| Total extent | 47 447/ 4,47Ha |
| Available extent | 19% |
| Zoning | Utility / Open Space 2 |
| Current use | <ul style="list-style-type: none">Forms part of the Kuils River Main Road bypass alignment (long term)Part of the site is leased for parking |
| Accountable Dept. | Property Transactions / Recreation & Parks |
| Spatial designation | Mixed-use; Structuring Open Space |
| SRA in place | No |
| Readiness | <ul style="list-style-type: none">Rezoning to GI1MATR process required |
| Potential yield | 53 bays |
| Comments | <ul style="list-style-type: none">Targeted portion is unencumberedHighly accessible to the Stellenbosch Farms areaOpportunity to serve Broader Kuilsriver/Blackheath industrial area |

Corner of station west road and range road. – ERF REM 1390. This site is currently being looked at a possibility in terms of feasibility.



Quick survey

Help us gain valuable insights quickly! Complete this brief survey or forward it to your suppliers.



Summary and Thank You

Thank you for participating in the BR&E feedback session. Your input is valuable for informing our plans for street light requests, intersection turn plans, and the truck holding project. Together we can make Blackheath industrial a place to do business.